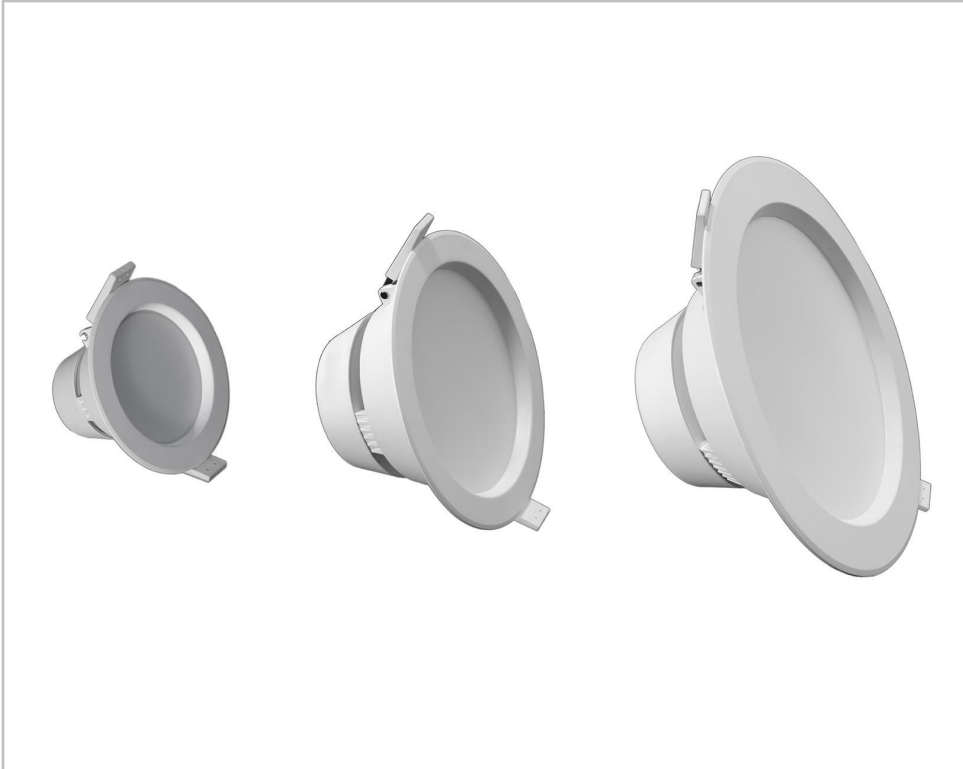


# INDU DOWNLIGHT



## Reliable, energy-efficient and affordable indoor lighting solution

INDU DOWNLIGHT offers a beneficial LED alternative to fluorescent spotlights for typical professional indoor venues such as reception areas, offices, conference rooms, corridors and lifts.

Available in various sizes/lumen outputs, INDU DOWNLIGHT is a flexible solution with all the advantages of the latest LED technology: low power consumption (savings of up to 90% compared with traditional spotlights), long lifetime, no specific maintenance requirements and control options for dimming and light-on-demand features.

INDU DOWNLIGHT contributes to a brightly-lit environment that creates a happier, healthier workforce, which is in turn more productive and likely to stick around.

IP 20

IK 03



CE



RAILWAY  
STATIONS &  
METROS



INDUSTRIAL  
HALLS &  
WAREHOUSES



SPORT  
FACILITIES

## Concept

Made of aluminium and equipped with a polycarbonate protector, INDU DOWNLIGHT is designed for recessed mounting with spring-retaining clips. It offers easy installation with a quick electrical connection. As an option, INDU DOWNLIGHT can be controlled via the DALI protocol and integrate a Building Management System (BMS). It can also be associated with detection devices to create responsive light-on-demand scenarios.

This modern lighting solution complies with the strictest indoor safety regulations. It is a fireproof solution with a high flammability resistance (650° C) to keep providing light during a fire and to prevent smoke emissions.

INDU DOWNLIGHT also provides high visual comfort. It delivers a neutral white light with a high colour rendering index (CRI 80).



The design offers an optimal heat dissipation for long-lasting performance.



The quick electrical connection is performed at the back of the luminaire.

## TYPES OF APPLICATION

- RAILWAY STATIONS & METROS
- INDUSTRIAL HALLS & WAREHOUSES
- SPORT FACILITIES

## KEY ADVANTAGES

- 3 sizes for flexibility
- Easy installation and maintenance free
- Cost-effective and efficient lighting solution
- High visual comfort
- White light with a high colour rendering index



The fire-resistant INDU DOWNLIGHT complies with the strictest indoor safety regulations.



INDU DOWNLIGHT is available in 3 sizes, each offering a typical lumen output.

## GENERAL INFORMATION

|                 |     |
|-----------------|-----|
| Driver included | Yes |
| CE mark         | Yes |
| ENEC certified  | Yes |
| ROHS compliant  | Yes |

## HOUSING AND FINISH

|                   |               |
|-------------------|---------------|
| Housing           | Aluminium     |
| Protector         | Polycarbonate |
| Tightness level   | IP 20         |
| Impact resistance | IK 03         |

## OPERATING CONDITIONS

|                                  |                                      |
|----------------------------------|--------------------------------------|
| Operating temperature range (Ta) | -20°C up to +40°C / -4°F up to 104°F |
|----------------------------------|--------------------------------------|

## ELECTRICAL INFORMATION

|                               |                    |
|-------------------------------|--------------------|
| Electrical class              | Class I EU         |
| Nominal voltage               | 220-240V – 50-60Hz |
| Power factor (at full load)   | 0.9                |
| Surge protection options (kV) | 1                  |
| Control protocol(s)           | DALI               |

## OPTICAL INFORMATION

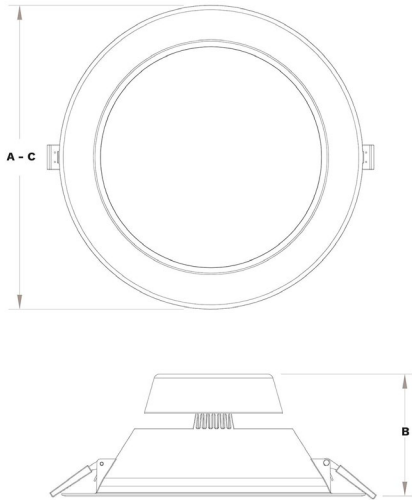
|                              |                           |
|------------------------------|---------------------------|
| LED colour temperature       | 4000K (Neutral White 840) |
| Colour rendering index (CRI) | >80 (Neutral White 840)   |

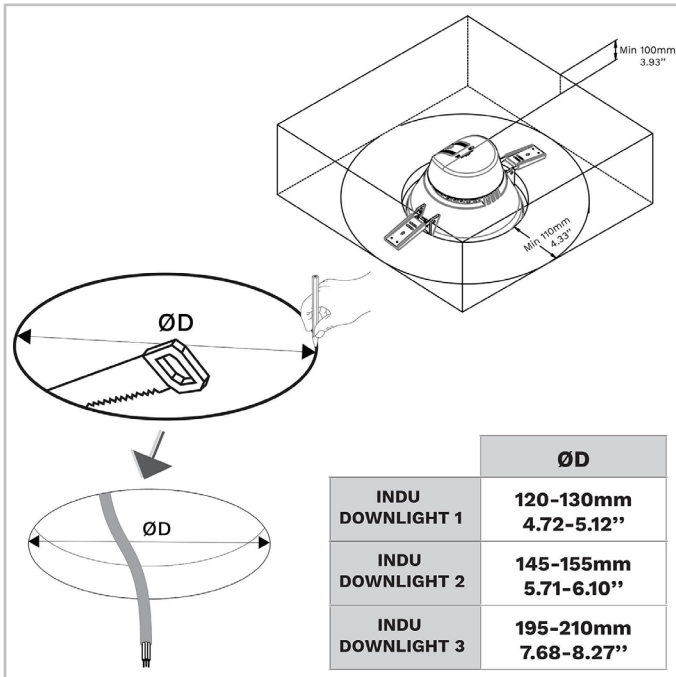
## LIFETIME OF THE LEDS @ TQ 25°C

|                    |               |
|--------------------|---------------|
| All configurations | 25.000h - L80 |
|--------------------|---------------|

## DIMENSIONS AND MOUNTING

|                        |   |
|------------------------|---|
| AxBxC (mm   inch)      | INDU DOWNLIGHT 1 - 145x78.5x145   5.7x3.1x5.7<br>INDU DOWNLIGHT 2 - 175x84.5x175   6.9x3.3x6.9<br>INDU DOWNLIGHT 3 - 245x98.5x245   9.6x3.9x9.6 |
| Weight (kg   lbs)      | INDU DOWNLIGHT 1 - 0.14   0.3<br>INDU DOWNLIGHT 2 - 0.27   0.6<br>INDU DOWNLIGHT 3 - 0.49   1.1   |
| Mounting possibilities | Ceiling-recessed  |







| Luminaire              | Number of LEDs | Current (mA) | Luminaire output flux (lm)<br>Neutral White 840 |      | Power consumption (W) |     | Luminaire efficacy (lm/W) |
|------------------------|----------------|--------------|---|------|-----------------------|-----|---------------------------|
|                        |                |              | Min   | Max  | Min                   | Max | Up to                     |
| INDU<br>DOWNLIGHT<br>1 | 14             | 70           | 900   | 900  | 9                     | 9   | 100                       |
| INDU<br>DOWNLIGHT<br>2 | 24             | 70           | 1400  | 1400 | 15                    | 15  | 93                        |
| INDU<br>DOWNLIGHT<br>3 | 48             | 60           | 2700  | 2700 | 25                    | 25  | 108                       |

Tolerance on LED flux is  $\pm 7\%$  and on total luminaire power  $\pm 5\%$

